



WEST VIRGINIA DEVELOPMENT OFFICE
 1900 Kanawha Boulevard East
 Charleston, WV 25305-0311
 Toll free: (800) 982-3386
 Office: (304) 558-2234 - WVDO.org

AVAILABLE PROPERTY PUTNAM BUSINESS PARK



FRAZIERS BOTTOM, WEST VIRGINIA

LOCATION

Located in City Limits - No
 Zoning -
 County - Putnam
 Flood Hazard Zone - Partially located in Zone AE

SIZE

Total Acreage - 205 Available Acreage - 16 (Phase I)
 Maximum Contiguous Acres - 12.30 (Phase I)

TRANSPORTATION

Interstate/4 Lane Highway - Intersects US Route 35 and 8 miles to I-64
 Interchange Exit 40
 Commercial Airport - 31 miles to Yeager Airport
 Railroad - None
 Railroad Siding - None
 Navigable River - Kanawha River, fronts 10 acres
 On-Site Barge Facility - None

UTILITIES

Electricity - Appalachian Power Company
 Voltage - 12 kV
 Phase - 3
 Gas - Union Oil And Gas Company (Natural gas well located on site)
 Size of Gas Main - 4"
 Gas Pressure - 100 psig

Water - West Virginia American Water
 Size of Water Main - 16" DIP
 Water Pressure (Static) -

Water Pressure (Residual) -
 Excess Capacity of Treatment Plant - 18 mgpd

Sewer - South Putnam PSD
 Size of Sewer Main - 16"
 Excess Capacity of Treatment Plant - 100,000 gpd current, but expandable

Telephone - Frontier
 Switching -
 Broadband Service -

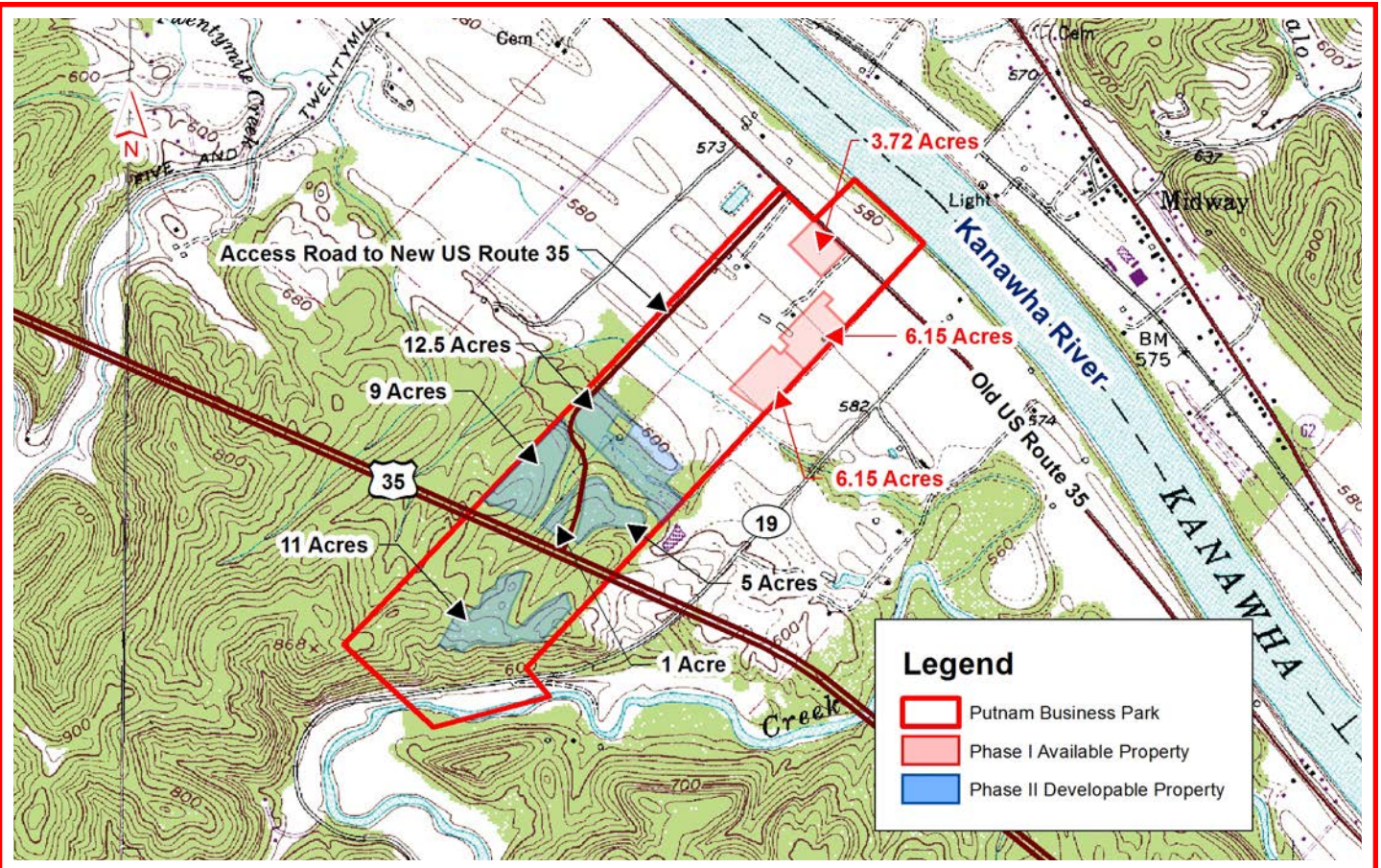
SALE/LEASE

Sale Price - \$82,000 per acre for all properties located in Phase I, the price hasn't been set for properties located in Phase II yet
 Sale Terms - Negotiable
 Lease Price - Negotiable
 Lease Terms - Negotiable
 Available Purchase or Lease Date - Immediately

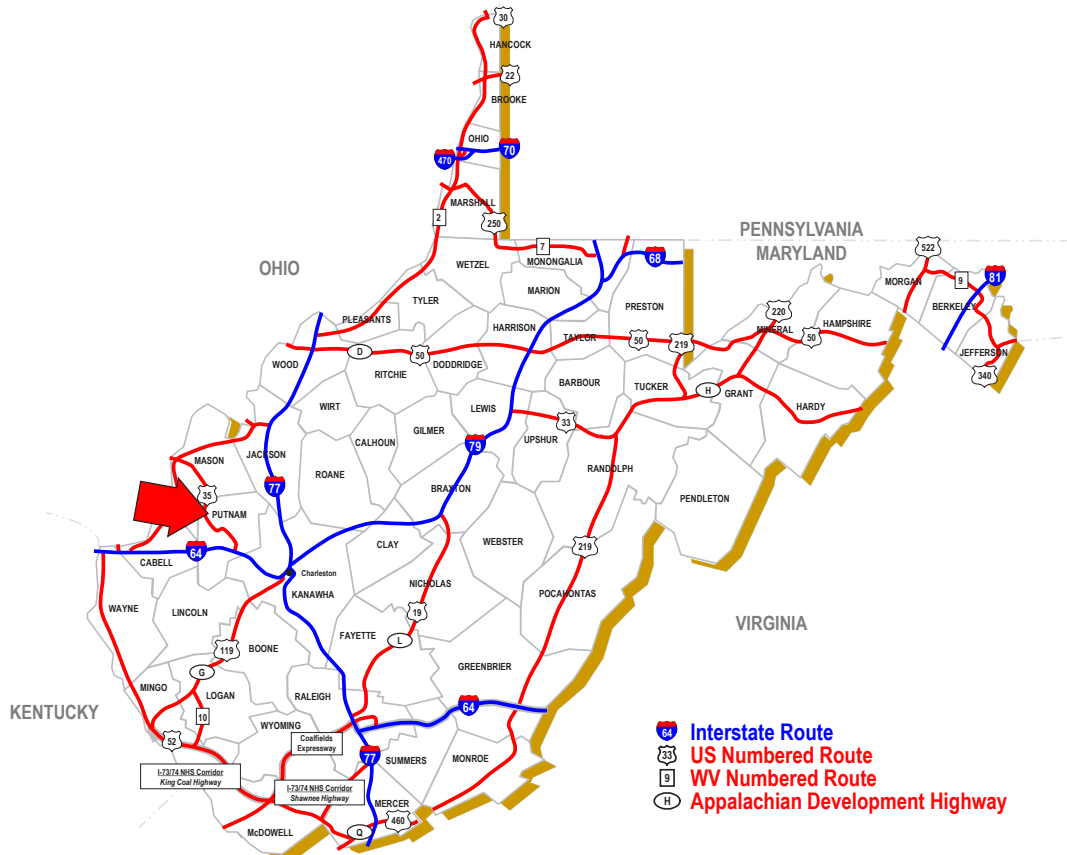
FOR FURTHER INFORMATION CONTACT

Andrew Dunlap, Executive Director
 Putnam County Development Authority
 PO Box 167
 Scott Depot, WV 25560
 Phone: (304) 757-0318
 Fax: (304) 757-7748
 Email: adunlap@pcda.org

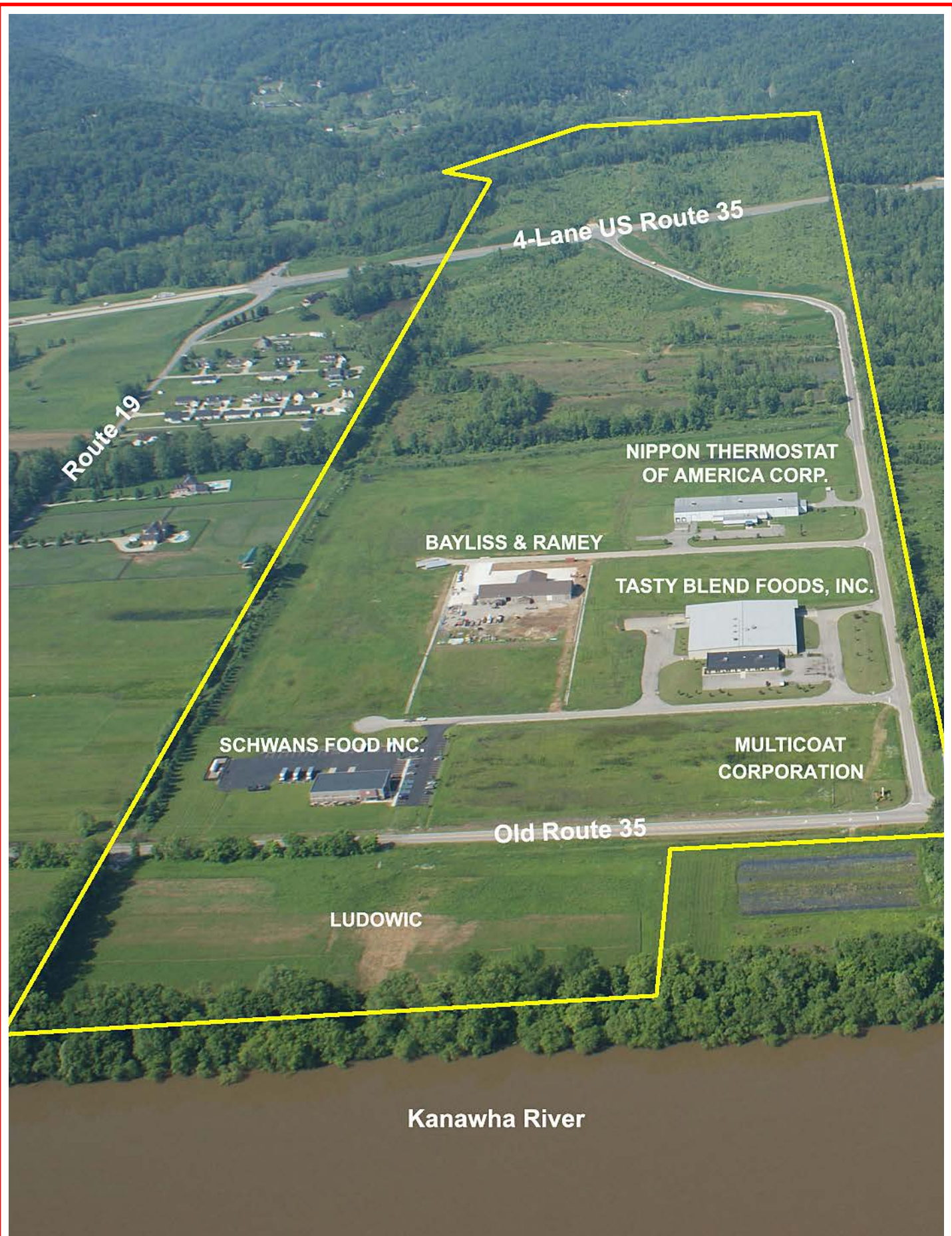
Disclaimer: The information contained herein is from multiple sources and is provided as a convenient guide. It is deemed reliable, but is not guaranteed, and is subject to change without notice. It is your responsibility to independently confirm its accuracy and completeness.



SCALE: 1" = 2000'



FRAZIERS BOTTOM, WEST VIRGINIA



Route 19

4-Lane US Route 35

NIPPON THERMOSTAT
OF AMERICA CORP.

BAYLISS & RAMEY

TASTY BLEND FOODS, INC.

SCHWANS FOOD INC.

MULTICOAT
CORPORATION

Old Route 35

LUDOWIC

Kanawha River

AERIAL SHOWING PROPERTY BOUNDARIES AND BUSINESS LOCATIONS WITHIN THE PARK